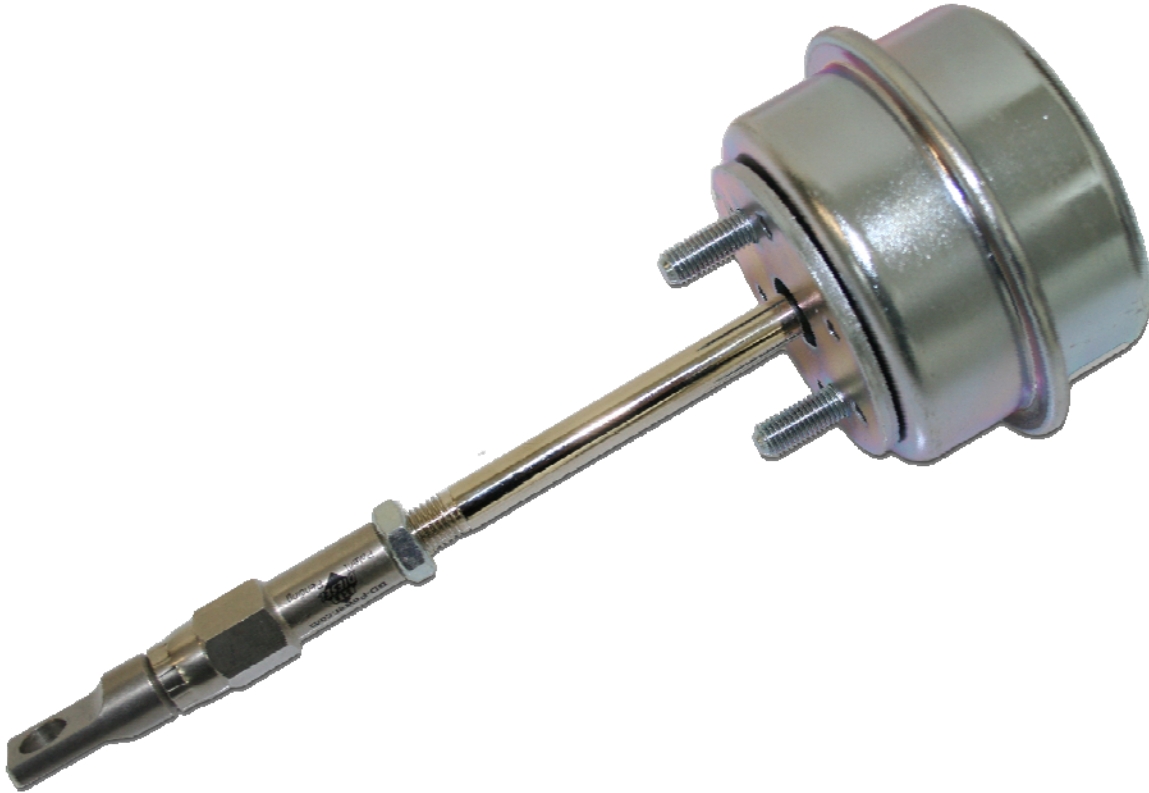




**DOWNLOAD THE LATEST  
INSTALL MANUALS AT  
[www.bddiesel.com](http://www.bddiesel.com)**



**ADJUSTABLE TURBO WASTEGATE KIT  
1994-1998 HX35 Dodge 5.9L Cummins**

**P/N# 1047150**

- Installation Manual -

*PLEASE READ ALL INSTRUCTIONS BEFORE INSTALLATION.*

**UNLESS AN EO# IS LISTED, THIS PRODUCT IS LEGAL IN CALIFORNIA FOR RACING VEHICLES ONLY, WHICH MAY NEVER BE USED UPON A HIGHWAY.**

BD Engine Brake Inc.

Plant Address: 33541 MacLure Rd. Abbotsford, BC, Canada V2S 7W2

U.S. Shipping Address: 1124 Fir Avenue, Blaine, WA 98230 U.S. Mailing Address: P.O. Box 231, Sumas, WA 98295

Phone: 604-853-6096 | Fax: 604-853-8749 | Internet: [www.bddiesel.com](http://www.bddiesel.com)

## *Introduction*

The purpose of this kit is to allow the user to adjust the amount of boost pressure generated by their turbocharger. The larger diaphragm prevents waste gate creep and controls the waste gate much more efficiently.

## *Available Accessories*

- *BD Super B turbo, BD Twin Turbo, BD Super B Special turbo*

## *Kit Contents*

<b>Part Number</b>	<b>Description</b>	<b>Qty.</b>
<b>145225SS</b>	Rod End	1
<b>1130141</b>	5/16" Nut	1
<b>1462446</b>	Lock Nut	2
<b>1453225</b>	Actuator	1
<b>1407153</b>	Clamp	2
<b>1407152</b>	Circlip	1
<b>1407155</b>	Wastegate Tubing	12 inches

BD Engine Brake Inc.

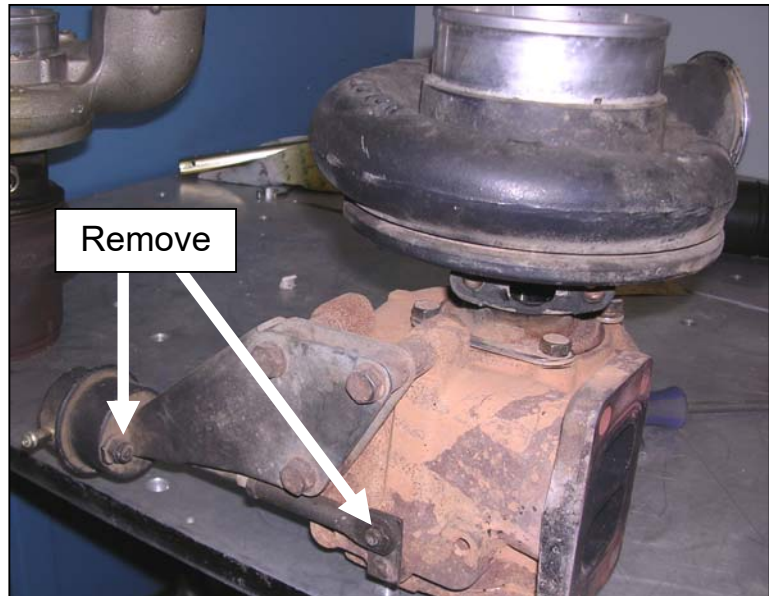
Plant Address: 33541 MacLure Rd. Abbotsford, BC, Canada V2S 7W2

U.S. Shipping Address: 1124 Fir Avenue, Blaine, WA 98230 U.S. Mailing Address: P.O. Box 231, Sumas, WA 98295

Phone: 604-853-6096 | Fax: 604-853-8749 | Internet: [www.bddiesel.com](http://www.bddiesel.com)

## Installation

1. Remove factory wastegate. Use an 11mm socket or wrench to remove the nuts holding the wastegate to the bracket.
2. Remove the cir-clip. Be sure to save this as it will be re-used.
3. Slide the wastegate off of the actuation rod and discard it. Note that you may need to apply air pressure to the wastegate cylinder to remove the wastegate.



4. Install the BD High Performance Wastegate into the wastegate bracket and secure to the bracket using the supplied mounting nuts (finger tight). Be sure to orientate the wastegate hose inlet correctly as well as install the wastegate adjustment locknut. Apply air pressure to the wastegate diaphragm; this should stroke the rod end forward. Align the wastegate arm hole with the BD rod end and insert and lock into place with the supplied cir clip. Once the clip is in place you can then tighten the mounting nuts.



5. To adjust the unit, loosen the lock nut and turn the rod end. Remember: The shorter the rod, the more boost pressure you will make. When looking at the rod end, turn the rod end clockwise for more boost pressure. The wastegate is pre-set to open at 30psi. Once you have set the boost pressure, re-install the circlip and tighten the lock nut.

BD Engine Brake Inc.

Plant Address: 33541 MacLure Rd. Abbotsford, BC, Canada V2S 7W2

U.S. Shipping Address: 1124 Fir Avenue, Blaine, WA 98230 U.S. Mailing Address: P.O. Box 231, Sumas, WA 98295  
Phone: 604-853-6096 | Fax: 604-853-8749 | Internet: [www.bddiesel.com](http://www.bddiesel.com)

Remember: For more boost pressure, shorten the wastegate rod, and for less boost pressure, lengthen the wastegate rod.

