



252 Granite St.
Corona, CA 92878
Support: 951-493-7100
www.aFepower.com

Intake Kit Installation Instructions: 2008-2010 Ford Power Stroke V8-6.4L Stage-2 Si Air Intake

Kit Part #	51-81262-E	Tools Required:	Part List:	1 Clamps, #064 (03-50006)
Make:	Ford	5/16" nut driver	1 Air filter P/N (Pro DRY S 21-90015)	1 Coupler, turbo (05-01104)
Model		13 mm socket or wrench	1 Housing (05-00958)	1 Coupler, hump (05-01204)
Year		10 mm socket or wrench	1 Cover (05C00958)	1 Grommet (03-50139)
Engine		Flathead screwdriver	1 Tube (05-00957)	1 Clamp, mini #012 (03-50023)
Super Duty	08-10	Ratchet and extension	6 Button head screws 5/16" x 1-1/4" (03-50217)	1 Elbow, plastic (03-50178)
(F-250/F-350/F-450/F-550)	V8-6.4L (td)	5/32" Hex Head (Allen Wrench)	2 Screw, hex head M4 (03-50030)	1 7/16" trim seal @ 14.5"L (05-00072)
		T-20 torx bit (included)	1 MAF sensor gasket (05-00118)	1 12 oz. Cleaner Spray (R90-10011)
		Pliers/cutters	1 Scoop (05-01055)	
			1 T-20 torx bit (03-50066)	
			2 Clamps, #080 (03-50011)	



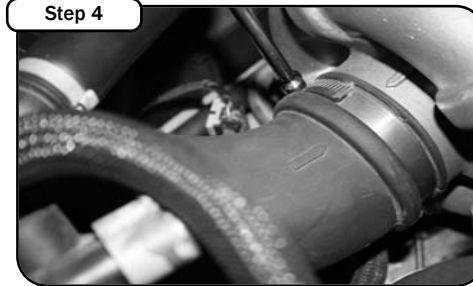
Step 1 Complete stock intake.



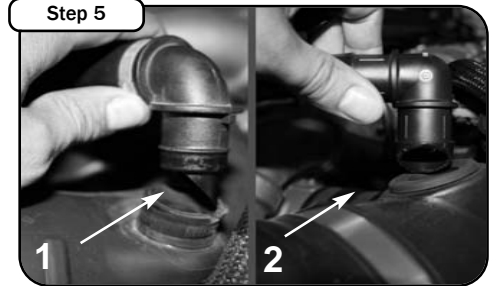
Step 2 Remove filter minder out of air box. Loosen factory clamp with 5/16" nut driver. Disconnect MAF sensor harness.



Step 3 Take auxiliary air line out of air box. Lift and pull firmly then remove OE air box out of vehicle.



Step 4 With 5/16" nut driver loosen both clamps on turbo and air box side.



Step 5 1) With cutters or pliers, cut and remove bottom OE clamp. Pull back fitting (Early production tubes which fitting can be re-used.) 2) Late production tubes, cut upper clamp and use plastic fitting & mini clamp provided. Remove tube.



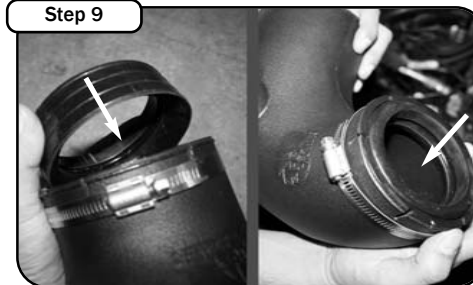
Step 6 Remove MAF sensor from stock air box using t-20 torx bit provided. Install into new tube using gasket and M4 screws and tighten using flat head screwdriver. Install grommet to hole on tube.



Step 7 Attach air filter to cover using 5/16" nut driver. Attach hump coupler to end of tube with clamps provided. Do not tighten.



Step 8 Attach cover to bottom half of new air box and secure using the six 5/16" button head screws provided.



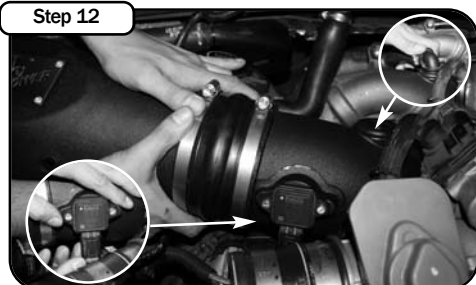
Step 9 Install turbo coupling inside of 05-00957 tube. Make sure radius is inside of tube. Do not tighten.



Step 10 Install new tube into vehicle and position coupler inside of tube on turbo. Note: make sure bead on coupler sits on turbo. The clamp on tube will secure the coupler inside of tube. Do not tighten.



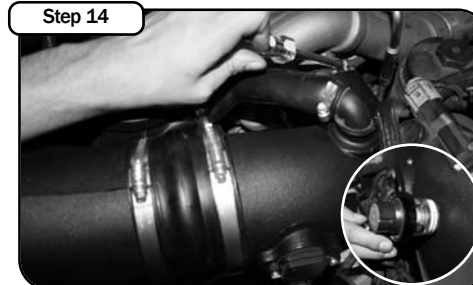
Step 11 Install intake box into vehicle and position to factory. Make sure intake box sits securely in grommets.



Step 12 Slide coupling onto intake tube and position. Do not tighten. Install crank case fitting into grommet on tube. Reconnect MAF sensor harness.



Step 13 Loosen the 2 bolts near passenger side battery for scoop install using 13mm socket or wrench. Attach trim seal to scoop and align to cut-out on housing. Re-install bolts and tighten. Note: Make sure the positive battery terminal is covered with factory cap.



Step 14 Tighten all clamps using 5/16" nut driver. Make sure clamp is over coupler from steps 9-10. Remove grommet from OE air box and install into cover. Install filter minder.



Step 15 Your installation is now complete. Make sure all hoses and clamps are tight. Check and retighten connections and filter after a few hours of operation. Thank You for choosing aFe. NOTE: Place enclosed CARB EO sticker on a clean/smooth surface near the intake system. EO identification label is required to pass the smog test inspection.

Note: This intake system has or may contain pre-production parts. Parts and or prices subject to change.