



Equipped with AEM® Dryflow™ Filter  
No Oil Required!

## INSTALLATION INSTRUCTIONS

### PART NUMBER: 21-8017

---

2005 CHEVROLET	Silverado 2500 HD	V8-6.6L DSL		C.A.R.B. E.O. # D-392-28
2005 CHEVROLET	Silverado 3500	V8-6.6L DSL		C.A.R.B. E.O. # D-392-28
2005 GMC	Sierra 2500 HD	V8-6.6L DSL		C.A.R.B. E.O. # D-392-28
2005 GMC	Sierra 3500	V8-6.6L DSL		C.A.R.B. E.O. # D-392-28
2004 CHEVROLET	Silverado 2500 HD	V8-6.6L DSL	LLY	C.A.R.B. E.O. # D-392-28
2004 CHEVROLET	Silverado 3500	V8-6.6L DSL	LLY	C.A.R.B. E.O. # D-392-28
2004 GMC	Sierra 2500 HD	V8-6.6L DSL	LLY	C.A.R.B. E.O. # D-392-28
2004 GMC	Sierra 3500	V8-6.6L DSL	LLY	C.A.R.B. E.O. # D-392-28

**Make note that not all 2004 model year vehicles are equipped with the LLY engine type. 21-8017 will only fit 2004 model year vehicles with LLY engine types. 2004 model year vehicles with the LLY engine type can be identified by VIN number. The 8th number of the VIN will be "2" on 2004 model year vehicles with the LLY engine type.**

**\* NOTE: Legal in California only for racing vehicles which may never be used upon a highway**

## PARTS LIST

Description	Qty.	Part Number
Air Filter Assy. 3.50 X 9" Dry Ele.	1	21-2049D
Heat Shield	1	20-8013
Inlet Pipe	1	2-80171
Hose, Silicone 3.50x3" Blk.	1	5-350
Grommet, 1/2"	1	784634
L-Key, T20	1	1-124
Mount, Rubber 1" X 8mm	1	1228560
Bolt, Socket 8-32 X 1/2"	2	1-2028
Washer, 8mm Soft Mount	2	559960
Nut, M8 Hex Serrated	2	444.460.08
1/2" Bnd. Hose Clamp, 3.15"-4.00"	3	9456

Read and understand these instructions **BEFORE** attempting to install this product. Failure to follow installation instructions and not using the provided hardware may damage the intake tube, throttle body and engine.

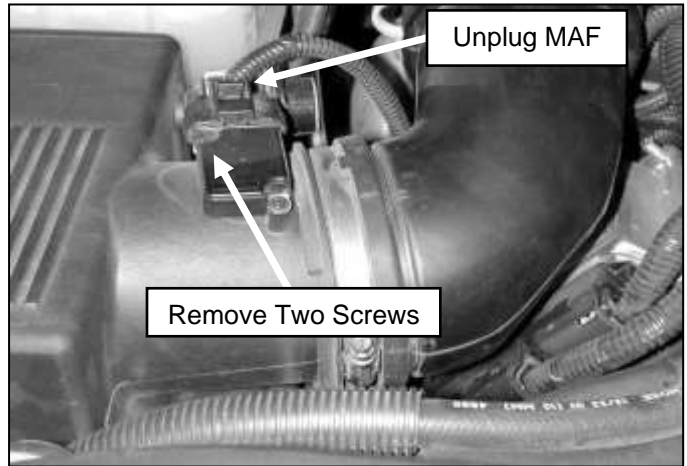
### 1. Preparing Vehicle

- a. Make sure vehicle is parked on level surface.
- b. Set parking brake.
- c. If engine has run in the past two hours, let it cool down.
- d. Disconnect negative battery terminal.
- e. Do not discard stock components after removal of the factory system.

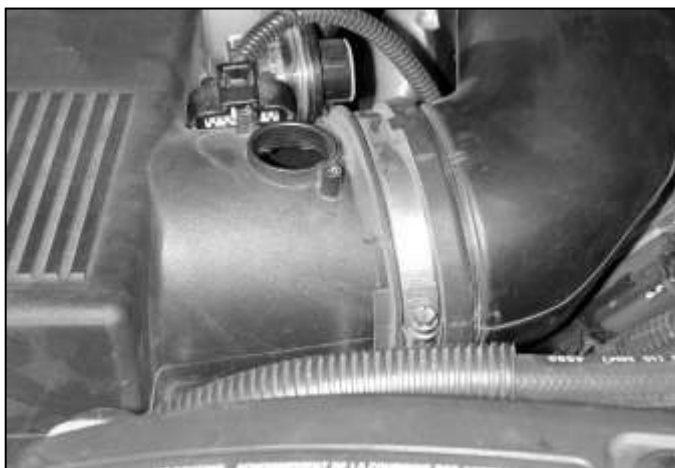
### 2. Removal of stock system



a. Factory air box system.



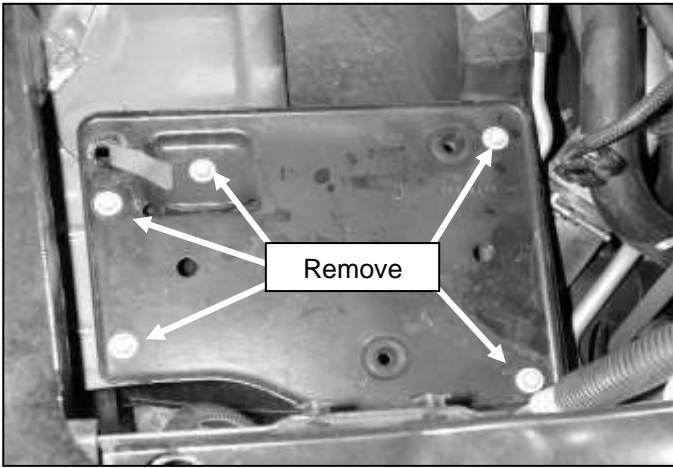
b. Unplug the wire harness from the mass air flow (MAF) sensor. Remove the two screws retaining the MAF sensor with the supplied torx tool. Carefully remove the MAF sensor.



c. Loosen the hose clamp at the air box side of the air intake tube.



d. Loosen the hose clamp at the turbo inlet side of the air intake tube. Remove the air intake tube from the engine bay.



e. Remove the air box by pulling straight up. Remove the air box mounting tray by removing the five bolts. Save the bolts for use during the installation of the AEM® heat shield.



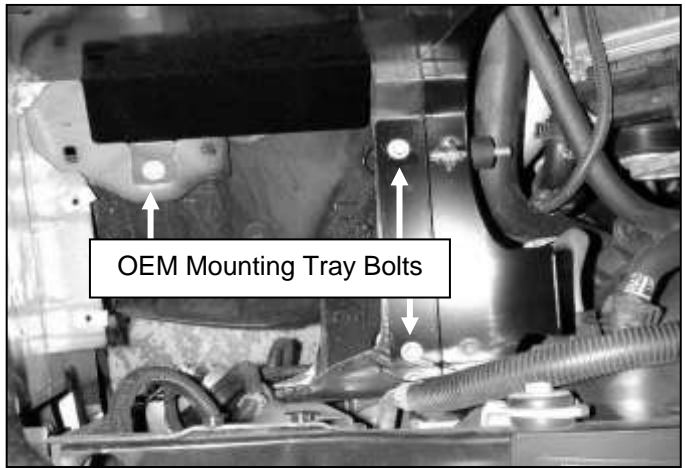
f. Remove the air filter restriction gauge from the factory air box. Make sure the rubber grommet stays in the air box. Reset the gauge by pressing the button on the top.

### 3. Installation of AEM® intake system.

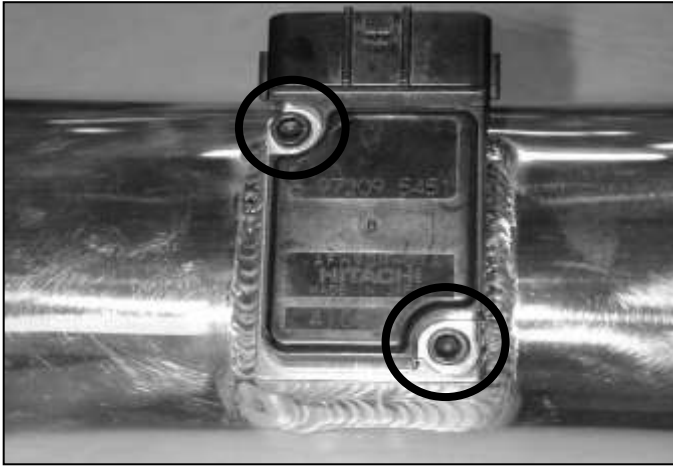
- a. When installing the intake system, do not completely tighten the hose clamps or mounting hardware until instructed to do so.



b. Install the supplied rubber mount on to the AEM® heat shield using one each of the supplied washers and locknuts.



c. Install the AEM® heat shield, using three of the original air box mounting tray bolts.



d. Install the MAF sensor using the supplied 8-32 screws. Use Caution to avoid damaging the o-ring.



e. Install the supplied rubber grommet in to the AEM® inlet pipe. Insert the air filter restriction gauge into the grommet, being careful not to push the grommet all of the way through the hole.



f. Install the supplied coupler onto the turbo air inlet hose using two #56 hose clamps.



g. Attach the air filter to the end of the AEM® intake pipe as shown.



h. Install the intake pipe into the coupler on the turbo inlet hose.



i. Align the intake pipe bracket with the rubber mount on the heat shield. Use the supplied washer and nylok nut and secure assembly.



j. Reconnect the MAF sensor wire harness on the underside of the intake pipe.



Factory air box system installed



AEM® intake system installed

#### 4. Reassemble Vehicle

- a. Position the inlet pipes for the best fitment. Be sure that the pipes or any other components do not contact any part of the vehicle. Tighten the rubber mount, all bolts, and hose clamps.
- b. Check for proper hood clearance. Re-adjust pipes if necessary and re-tighten them.
- c. Inspect the engine bay for any loose tools and check that all fasteners that were moved or removed are properly tightened.
- d. Reconnect negative battery terminals and start engine. Let the vehicle idle for 3 minutes. Perform a final inspection before driving the vehicle.

#### 5. CARB Sticker Placement

- a. The C.A.R.B. exemption sticker, (attached), must be visible under the hood so that an emissions inspector can see it when the vehicle is required to be tested for emissions. California requires testing every two years, other states may vary.

#### 6. Service and Maintenance

- a. It is recommended that you service your AEM<sup>®</sup> Dryflow<sup>™</sup> filter every 20,000 miles for optimum performance. Use AEM Dryflow cleaning kit part # 21-110.
- b. Use aluminum polish to clean your polished AEM<sup>®</sup> intake tube.
- c. Use window cleaner to clean your powder coated AEM<sup>®</sup> intake tube. **(NOTE: DO NOT USE aluminum polish on powder coated AEM intake tubes).**

For technical inquiries e-mail us at sales@aemintakes.com or call us at 800.992.3000
---

#### AEM Air Intake System Warranty Policy

AEM<sup>®</sup> warrants that its intake systems will last for the life of your vehicle. AEM will not honor this warranty due to mechanical damage (i.e. improper installation or fitment), damage from misuse, accidents or flying debris. AEM will not warrant its powder coating if the finish has been cleaned with a hydrocarbon-based solvent. The powder coating should only be cleaned with a mild soap and water solution. Proof of purchase of both the vehicle and AEM intake system is required for redemption of a warranty claim.

This warranty is limited to the repair or replacement of the AEM part. In no event shall this warranty exceed the original purchase price of the AEM part nor shall AEM be responsible for special, incidental or consequential damages or cost incurred due to the failure of this product. Warranty claims to AEM must be transportation prepaid and accompanied with dated proof of purchase. This warranty applies only to the original purchaser of product and is nontransferable. Improper use or installation, use for racing, accident, abuse, unauthorized repairs or alterations voids this warranty. AEM disclaims any liability for consequential damages due to breach of any written or implied warranty on all products manufactured by AEM. Warranty returns will only be accepted by AEM when accompanied by a valid Return Merchandise Authorization (RMA) number. Credit for defective products will be issued pending inspection. Product must be received by AEM within 30 days of the date RMA is issued.

If you have a warranty issue, please call (800) 992-3000 and our customer service department will assist you. A proof of purchase is required for all AEM warranty claims.