



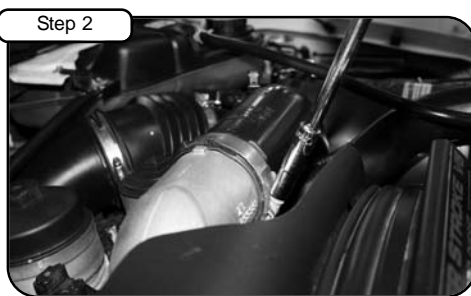
advanced FLOW engineering™
 P.O. Box 1719
 Corona, CA 92878
 Support: 951-493-7100
 aFepower.com

BladeRunner™ Charged Air Manifold Installation Instructions: 2005-2007 Ford Power Stroke V8-6.0L (td)

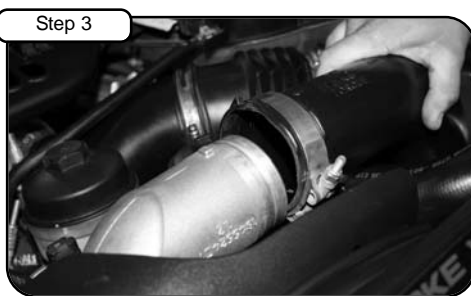
Part Number: 46-10041		Tools Required: 7/16" socket or wrench 10mm socket or wrench 8mm socket or wrench Torque wrench Ratchet w/ extension 3/16" allen key		Parts list: 1 Manifold, Charged Air 1 Screw, hex head M6 x 1.00 x 25 2 Screw, hex head M6 x 1.00 x 100 1 Stud, double end M6 x 25 1 Screw, hex head M6 x 1.25 x 12 1 Seal ring		4 Washer, flat M6 2 Plug, 1/8" NPT 1 Threadlocker, blue 1 Washer, flat M8 2 Nut, hex M6 x 1.00	
Make: Ford							
Model:	Year:	Engine:					
F-250	'05-'07	V8-6.0L (td)					
F-350	'05-'07	V8-6.0L (td)					
F-450	'05-'07	V8-6.0L (td)					
F-550	'05-'07	V8-6.0L (td)					
Excursion	'05-'06	V8-6.0L (td)					



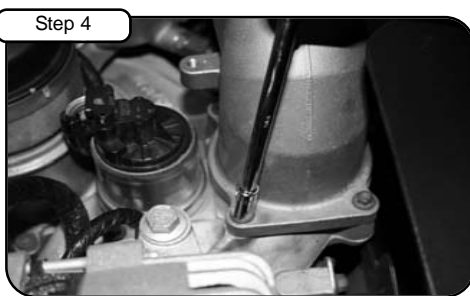
Step 1
Stock Intake Manifold.



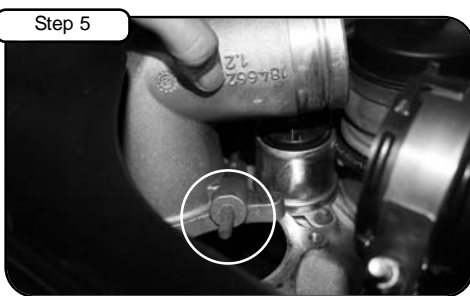
Step 2
With a 7/16" socket and ratchet, loosen the intercooler tube hose clamp.



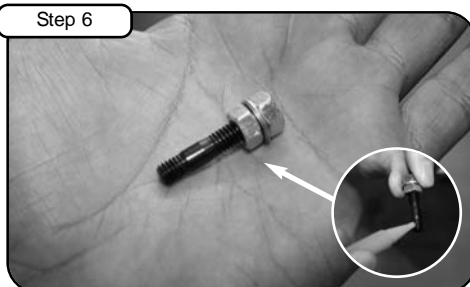
Step 3
Pull back clamp.



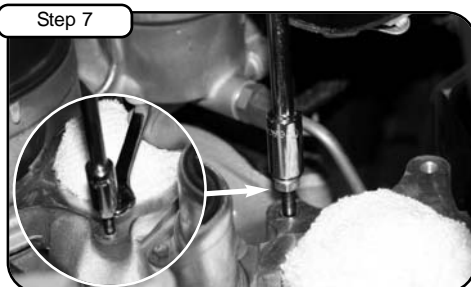
Step 4
With 8mm socket and extension loosen 4 screws holding in manifold.



Step 5
Pull back manifold screw away from fan shroud and remove manifold.



Step 6
Place M6 washer between 2 hex nuts at long threaded end of stud and tighten.



Step 7
Apply threadlocker and install stud into mounting hole on drivers side toward rear of vehicle. Loosen and remove nut and washer. See Notes 1, 2 & 5.



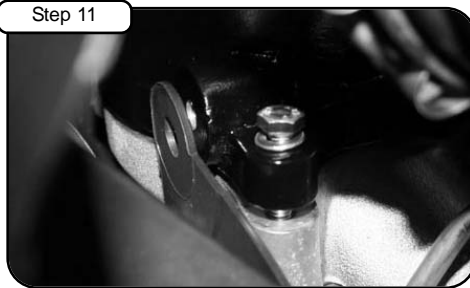
Step 8
Install 1/8" NPT plugs to back of manifold. Tighten using 3/16" allen key. Attach new seal ring to bottom of manifold. Install new aFe BladeRunner manifold to vehicle. See Notes 2 & 3.



Step 9
With nut and washer provided tighten loosely on manifold screw from step 7.



Step 10
Install and secure manifold using 2 M6 x 1.00 x 100 screws and washers provided and tighten loosely.



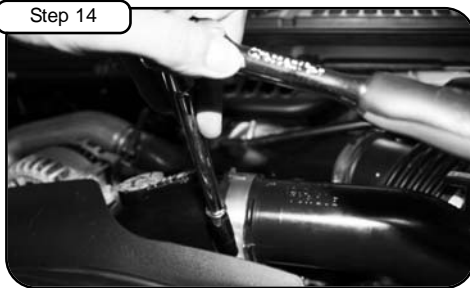
Step 11
Using M6 x 1.00 x 25 screw and washer secure last remaining manifold mount and tighten. Tighten all screws and nuts using 10mm socket or wrench. See Notes 2 & 5.



Step 12
Attach screw through fan shroud hole and tighten to manifold. See Notes 2 & 5



Step 13
Re-attach intercooler tube to manifold.



Step 14
Tighten clamp using 7/16" nut driver. See Notes 2 & 4.



Step 15
Your installation is now complete. Please check all screws periodically. Re-tighten if necessary. Thank you for choosing aFepower!

Notes: 1) Use provided Threadlocker (P/N 03-50162) on all screws. 2) DO NOT over-tighten screws. Please tighten to correct torque spec(s). advanced FLOW engineering™ is not responsible for improper install. 3) Apply 62 in. lbs. torque. 4) Apply 75 in. lbs. torque. 5) Apply 10 ft. lbs. torque.